



HYDRO MYANMAR COMPANY LTD.,
PROFESSIONAL SURVEY SOLUTION

Hydro Myanmar

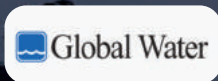
Professional Survey Solution

Company Profile

We acquire and interpret environmental, geotechnical and geophysical data and use our world-class expertise to turn data into valuable knowledge.

Powered by

POWERFUL EQUIPMENT AND SOFTWARES



Bathymetric Mapping, from Remote Sensing, Desktop Study to Field Survey via Multi-Beam, SideScan or Single Beam Sonar, from low-cost to high-end solutions leveraging the right technology at hand.

Bathymetry is the baseline for a wide range of fields project including Hydrography Charts, Coastal Management, Marine Research, Civil Engineering, Scuba Diving, Archaeology

Contents

About Us _____

What We Offer _____

Our Projects _____

Why Choose Us _____

Contact Us _____



About Us

Through our integrated data acquisition, analysis and advice, we unlock insights from Geo-data to help you design, build and operate assets in a safe, sustainable and efficient manner.

We use state-of-the-art technology to produce detailed plans of seabeds, harbours and waterways. The role involves measuring and mapping underwater surfaces and studying the morphology (construction) of the ocean floor, showing the depth, shape and contours.

Timing

We make sure our projects are finished in timely manner no matter what the situation is.

Safety

Our safety first process comes in best safety measurement to our workers and environment.

Quality

Our safety first process comes in best safety measurement to our workers and environment.

How do we service provide to our clients?



We are going beyond meeting your customer's basic needs which involves much more than providing support in a timely and pleasant manner to be with our products and services.



Client Satisfaction

Our team members and workers are always making sure the best quality we can give to what our customers want.



Our Mission

Our Mission is to provide highest science and technology survey service to the industry.



General Contraction

We are responsible for managing the project given by the client. We keep in contact with our clients in order to get notified what we are doing for them.



Project Planning

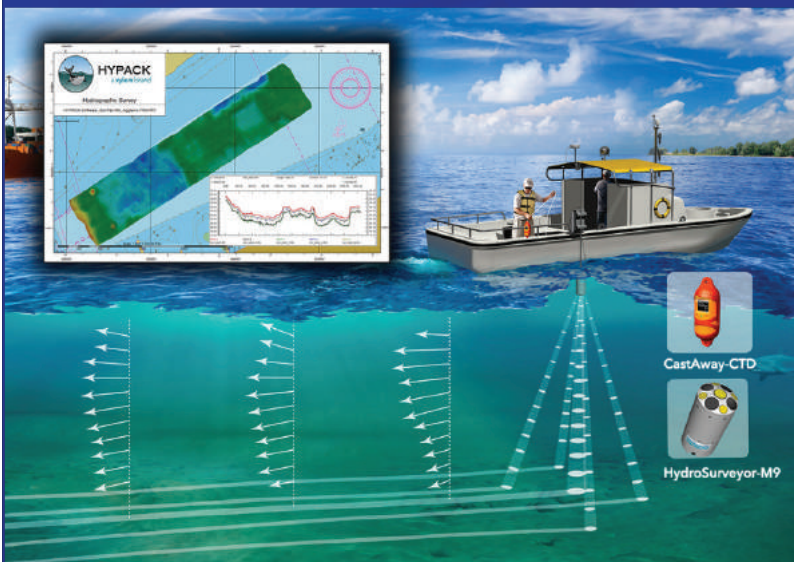
We make sure our process and goals are achieved at every stage we are going through.

What We Offer



Hydrographic and Bathymetric Survey

Thanks to our experience, we measure depths in both artificial and natural water bodies. Our approach depends both on the depth and other criteria, and on the methodologies used.



When we work in shallow water and in depth, we adhere to a very strict HSE policy. It should be noted that our employees have both international HSE certificates, and at the same time have been trained in model courses of the International Maritime Organization obtaining acoustic images of sea floor relief. At the same time, SONAR surveying work is widely applied for implementation of submarine analysis of beaches.



Oceanographic Survey

Oceanography applies chemistry, geology, meteorology, biology, and other branches of science to the study of the ocean.





Geotechnical and Geophysical Survey

Geophysical and geotechnical assessments are used to collect and analyse data to better understand seabed and subsurface conditions. Our surveys have helped many engineers determine potential engineering constraints and identify safety hazards by collecting information on the nature and mechanical properties of the seabed.



Topographic

A topographic survey locates all surface features of a property, and depicts all natural features and elevations. In essence it is a 3-dimensional map of a 3-dimensional property showing all natural and man-made features and improvements.



Photogrammetry

Photogrammetry is the science of making measurements from photographs. The input to photogrammetry is photographs, and the output is typically a map, a drawing, a measurement, or a 3D model of some real-world object or scene.

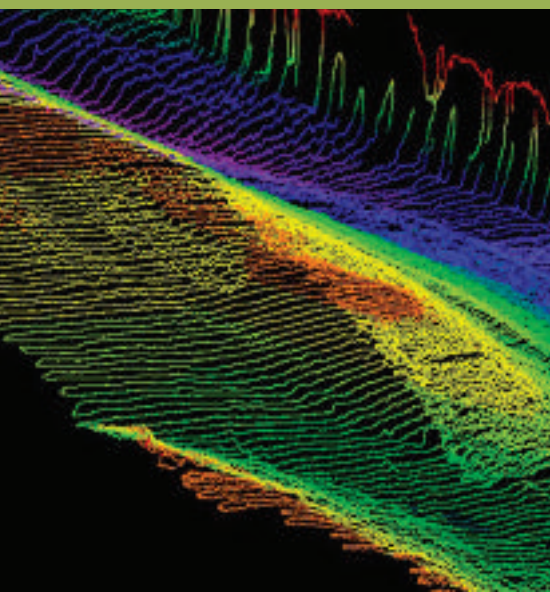


What Choose Us?

We are Professional Hydro Surveyors

5 Years
Exploring
the earth

Through our integrated data acquisition, analysis and advice, we unlock insights from Geo-data to help you design, build and operate assets in a safe, sustainable and efficient manner.

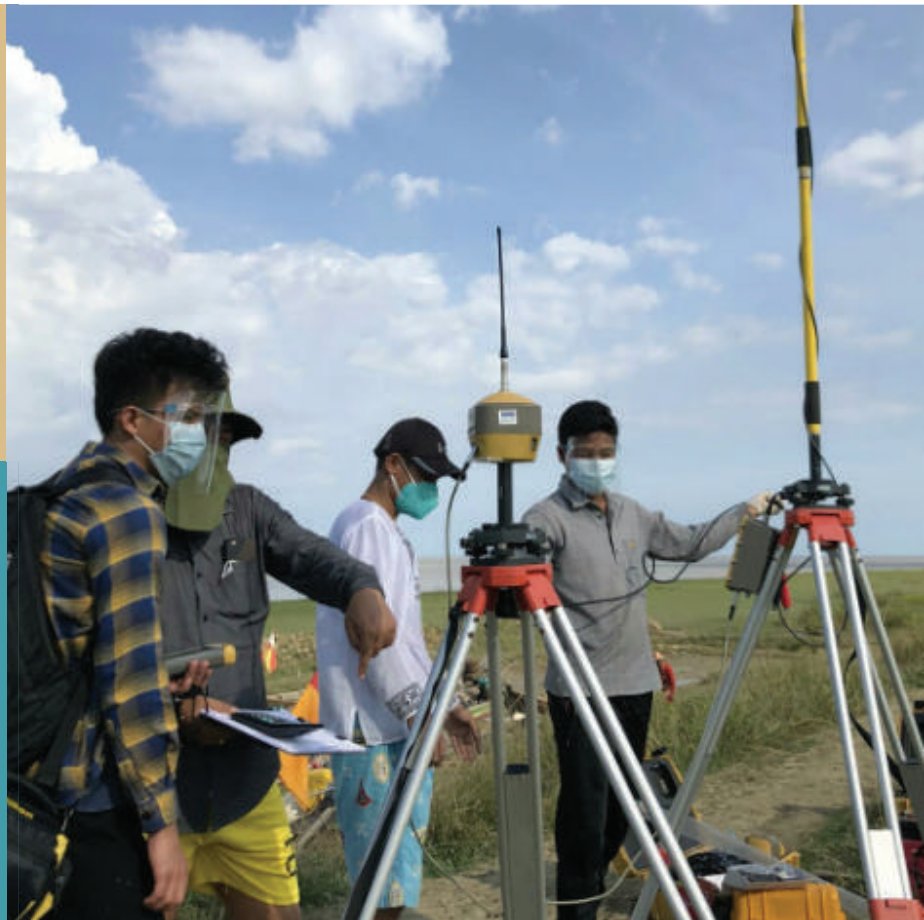


2016

Started

100 +

Survey Projects



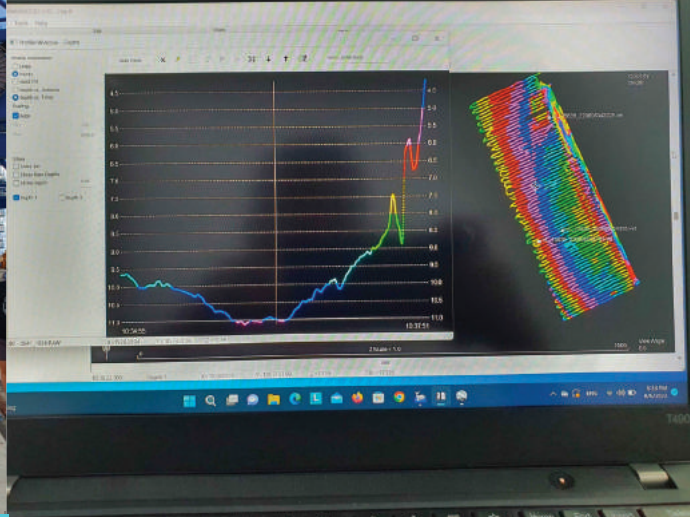
12,000

km explored

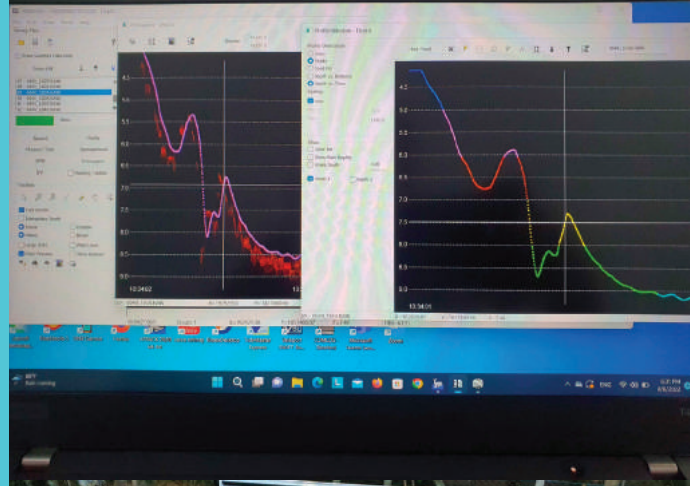
World- Class

Equipments





Gallery



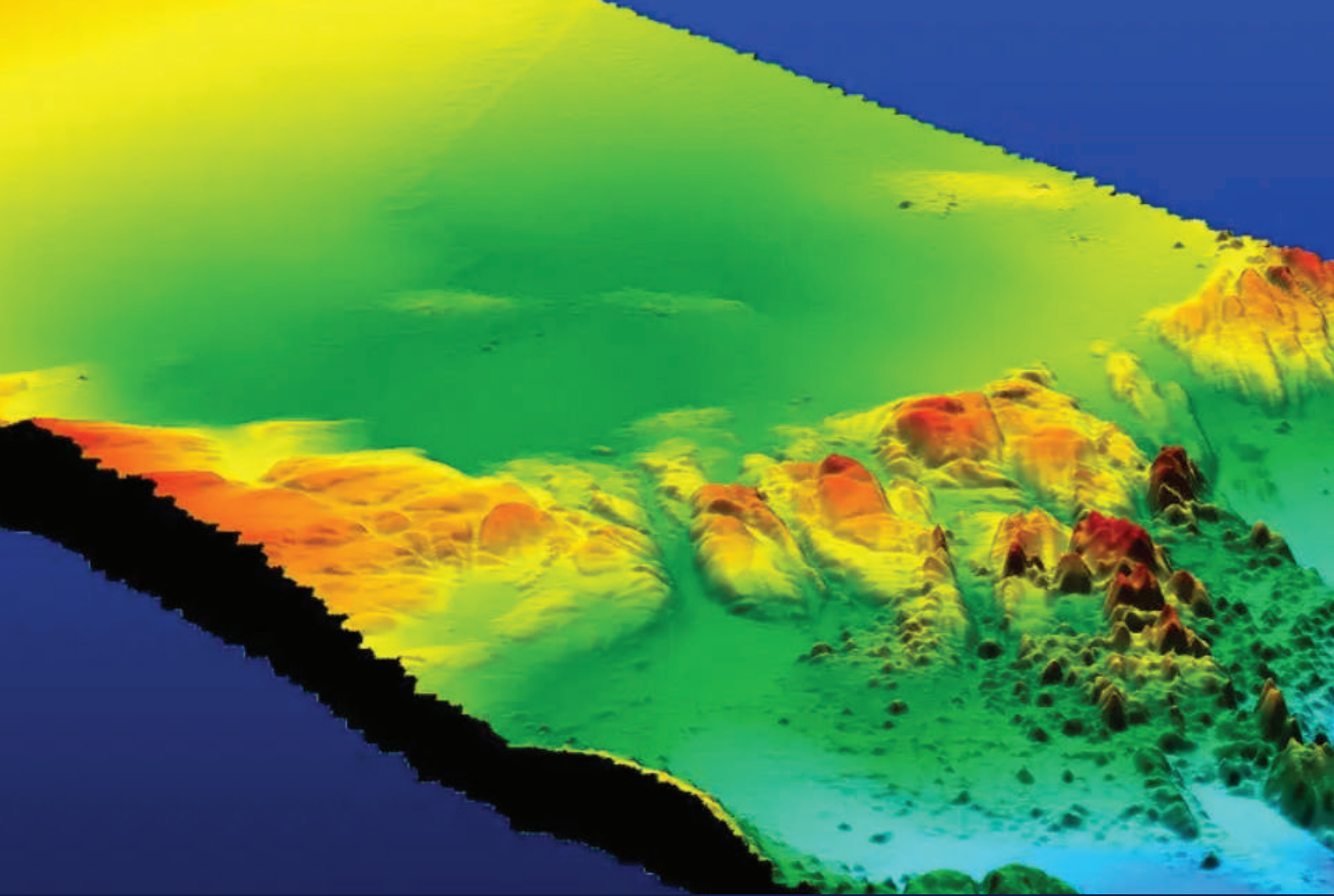





Gallery








Contact

 B-565, Muditar Condo(1), U Ba Han St,
Mayangone Tsp, Yangon , Myanmar

 contact@hydromyanmar.com

 +959254833534, +959799171639